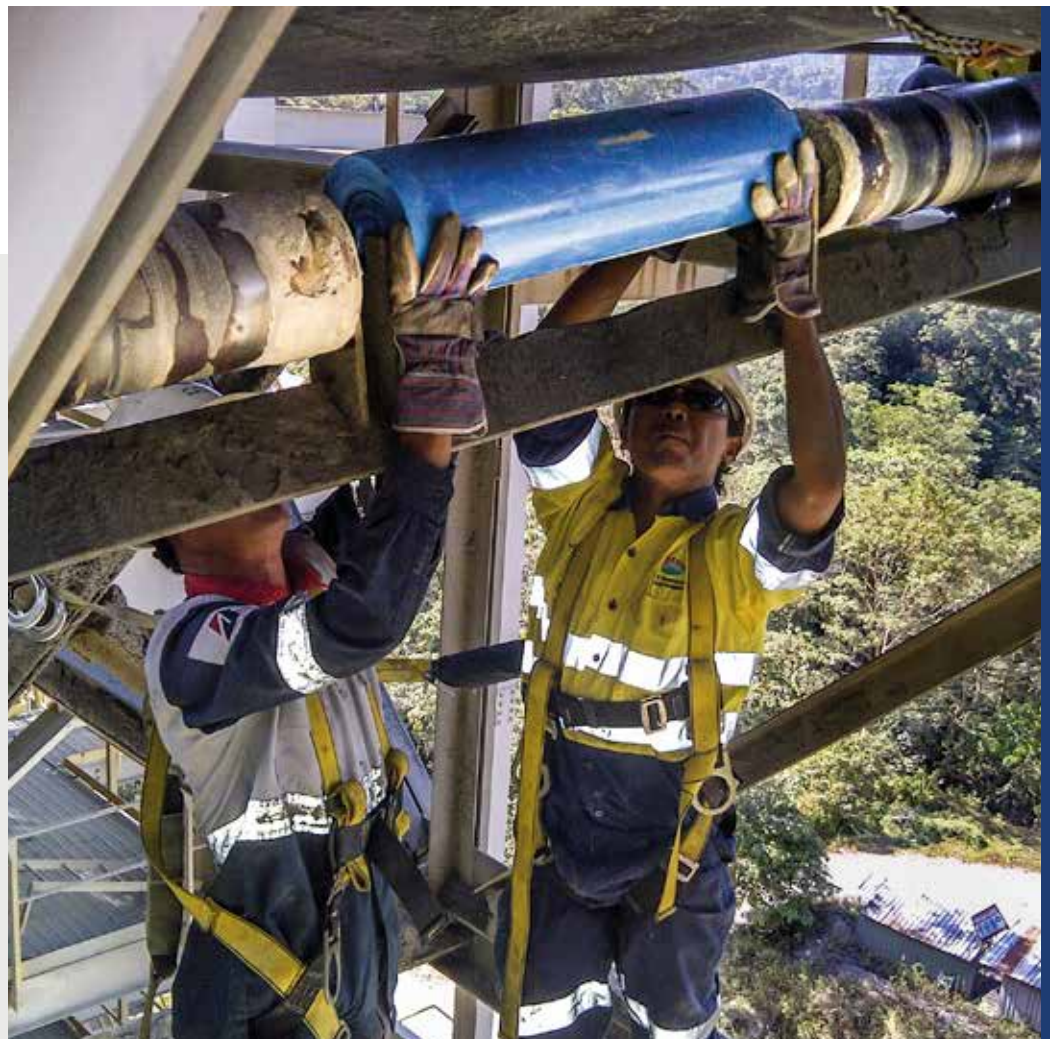




## **COMPOSITE ROLLER**

ULTRA-LIGHTWEIGHT, EXTRA DURABLE  
... AND QUIETER





# COMPOSITE ROLLER

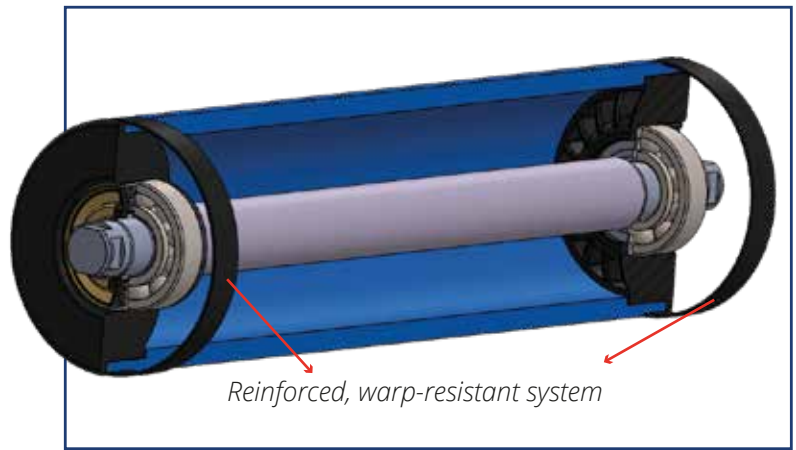
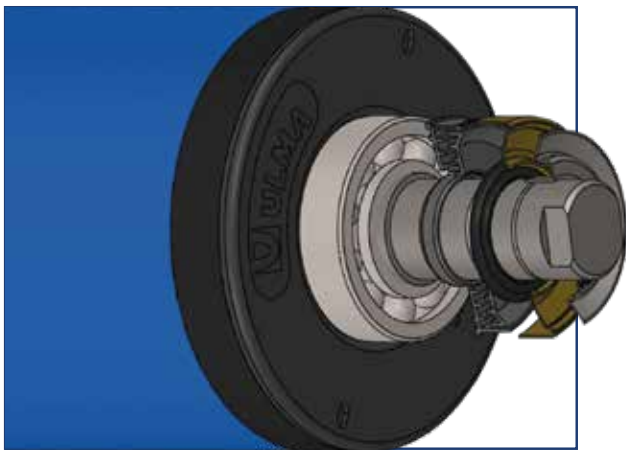
The **Belt-Friendly** roller is re-writing the rules of the game

## MECHANICAL PROPERTIES MAINTAINED IN EXTREME SITUATIONS

- High temperatures and loads.
- Damp and corrosive environments.
- System stress.

## THE PERFORMANCE OF A CEMA E AND F METAL ROLLER WITH HALF THE WEIGHT

- Weight reduction: 50%.
- Noise reduction:  $\pm 10$  dB.
- Greater resistance to coating erosion.



Patented sealing and manufacturing system: reliability and quality backed up by an extensive research, development and testing process.

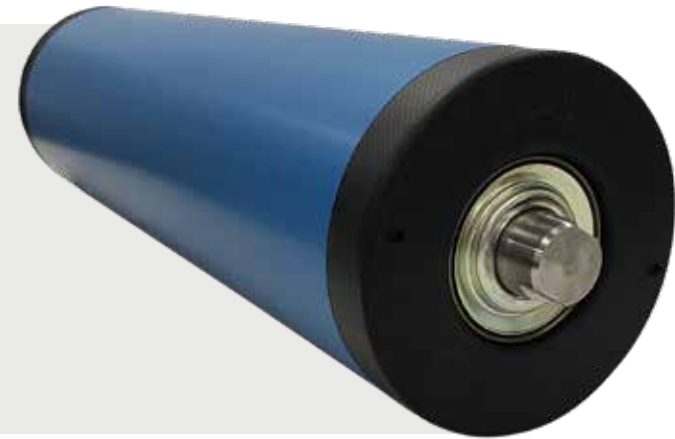
## How did we manage to halve the weight while maintaining the same resistance?

### ULMA - Innovation

- The system can maintain the tube's shape and dimensions at high loads and temperatures.
- We have fixed the joint between the housing and the tube, removing the main point of failure.
- The **ULMA Conveyor Components solution** exceeds the load values required under CEMA Standards.

### ULMA - Quality

- First-class materials and parts.
- A manufacturing process based on cutting-edge technology and specialized equipment that ensures the integrity and reliability of every component.



ULMA's GAZIMO® monitoring system can also be integrated to maximize your system's productivity and profitability.



## ULMA, the Mining-Friendly company

*Customized mining solutions*



### We optimize the long-term efficiency of your systems

1. We analyze your system to identify points of failure in rollers and other components.
2. We simulate breakage situations in our laboratory.
3. We will find the solution to optimize your system's performance.
4. We conduct monitoring to ensure the improvements made function correctly and to make any necessary extra adjustments.



### Responsiveness

We have strategically located our professionals and warehouses to ensure on-site support and a fast response to make sure your system operates at its optimal level at all times.



### Experience and customized solutions

With decades of experience in the mining industry, we offer tailor-made solutions designed to maximize your system's efficiency and productivity.



### Proactive innovation

Our process allows us to detect points of weakness and offer customized solutions.

## ULMA - Technology

- Finite element simulations to reinforce critical parts.
- Laboratory and field tests to identify stress points.
- Patented sealing and building solution.

# ULMA CONVEYOR COMPONENTS

## in the world



### THE AMERICAS

- **CANADA**  
Mr Rajesh Shah
- **CHILE**  
Antofagasta - Santiago
- **MEXICO**  
Ms Nidia Santos
- **PERU**  
Arequipa - Lima
- **USA**  
Mr Rajesh Shah
- **CENTRAL AMERICA**  
Mr Edwin Acevedo

### EUROPE/AFRICA

- **SPAIN**  
**Otxandio - Bizkaia**
- **DENMARK**  
Scandi Roll
- **FINLAND**  
New Paakkola
- **GERMANY**  
Rödermark
- **GREECE**  
Solergon
- **FRANCE**  
Ms Isabelle Van Caillie
- **MOROCCO**  
Eximcom
- **NORWAY**  
Aanestad Service AS.
- **PORTUGAL**  
OZEC Equipamentos Industriais Lda.
- **SLOVENIA, CROATIA, BOSNIA, HERZEGOVINA, SERBIA AND KOSOVO**  
Siming d.o.o

### ASIA/AUSTRALIA

- **AUSTRALIA**  
Ms Isabel Zapiain
- **INDONESIA**  
Mr Herman Gunawan
- **THAILAND AND LAOS**  
Giant Tire and Service Co.Lt.
- **UNITED ARAB EMIRATES**  
Arab Emirates Bandac
- **MIDDLE EAST**  
KENZ Jordan for Industrial Supplies

■ ULMA CONVEYOR COMPONENTS  
■ COMMERCIAL DELEGATIONS



[www.ulmaconveyor.com](http://www.ulmaconveyor.com)

